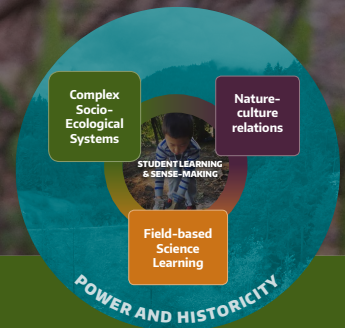




# Family Science Learning Engagement



LE 1.E Why is this season important to our family?

## Activity Purpose

You can use this activity to discuss and share seasonal knowledge and practices, and why these are important to you as a family. There are many different ways to understand and talk about seasons, including in relation to celestial bodies (changes in Earth's rotation in relation to the sun), in relation to seasonal practices (changes in what people, plants, and animals do differently in each season), and in relation to climate patterns, such as rain, wind, drought. These different ways of thinking about seasons are all interconnected, but are different ways of centering and honoring diverse ways of knowing and being.

## Activity Overview

Share things that only happen in this season for your family (for example, events and activities, foods you might eat, artifacts you make, decisions you make)

- Brainstorm (and write down) as many things as you can think of that your family does in this season.
- You can use the template provided to guide your discussions, or you can make your own template by drawing something similar on a blank sheet of paper.



What can  
you do to  
support  
learning?

- » It is better to surface many ideas instead of looking for one “right” answer. Encourage and support everyone in your family to share.
- » If someone is having a hard time thinking of something your family does in this season, you can help them by sharing stories from this season in the past (“Remember last year when we went to [a specific place] with [specific people]?”).
- » Ask questions to keep the discussion going. Some examples:
  - Why do you think we do [whatever event, practice, etc. is shared] during this season and not during other seasons?
  - What decisions do we usually need to make during this season and why?

## Connecting with other families

- » Ask family members and friends to have these discussions too. Then you can share your seasonal stories and compare and contrast. You could also ask family members and friends to do some of the extension activities that are listed at the bottom of the activity sheet with your family.

### NGSS Science Practices Emphasized

- Asking Questions
- Obtaining, Evaluating, and Communicating Information

### Disciplinary Core Ideas & Important Phenomena

#### Seasonal patterns

For example: "Seasonal patterns of sunrise and sunset can be observed, described, and predicted" (K-2; Next Generation Science Standards)

## Key Ideas & Practices

### Phenology

- Phenology is the study of plant and animal life cycle events, and how those are influenced by variations in seasons and climate.



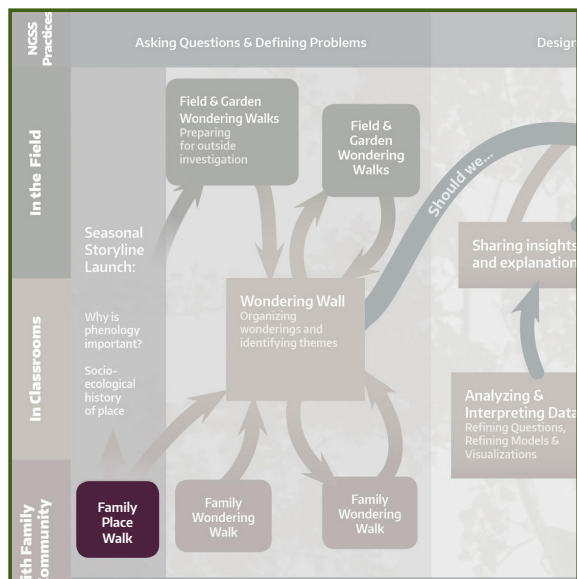
### CONNECT TO OTHER ACTIVITIES

- Learning Engagement 1.D:  
What is the Current Season?

### LEARNING IN PLACES FRAMEWORKS TO CONSIDER

- Phenology

### YOUR PLACE IN THE SEASONAL STORYLINE





## Why is this season important to our family?

What season is it in the place where you live? \_\_\_\_\_

*In the space below, write down 1 or 2 things that your family does in this season.*

<b>What do we do that is special in this season?</b>	<b>Why do we do these things in this season?</b>	<b>Why are these things important to our family?</b>	<b>What decisions do we usually need to make in this season?</b>

### *Extension Activities:*

- Think about another place that is important to your family. What season is it right now in that place? How is that place different from the place where you are now?
- Look at family pictures of places that are important to your family. What season was it in the different pictures you took? How do you know?
- Look for pictures of different places online, in magazines, or in books. What season is it in the different pictures you find? How do you know?