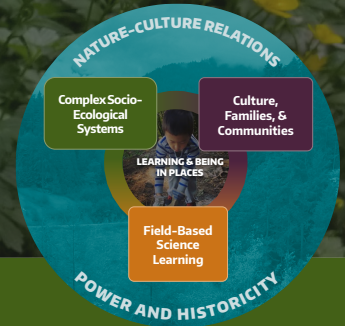




Family Science Learning Engagement



LE 10.B Making & Sharing Our Ethical Decisions

Activity Purpose

Now that you've made a decision about your "Should We" question, your decision becomes much more powerful when you share it with others! In this activity, you'll decide on some ways to share your decision, why you think the decision is important, and what you hope to accomplish.

Activity Overview

This activity has 2 parts.

- » **Part 1:** Review your decision about your "Should We" question.
- » **Part 2:** Decide what and how to share your decision with others and do it!



What can
you do to
support
learning?

- » This is an opportunity to share your family's histories and values. You might also explore a familial or cultural practice or decision you make in the same way as previous generations in your family.
- » There are many ways that you can share your decisions and recommendations: making a video, using social media, making a flyer, writing a letter to a city councilperson, etc. Encourage the family to think broadly about ways to share your decisions!
- » Decisions and recommendations are more powerful when people feel a sense of "collective agency". Encourage the family to think broadly about who to share with and why.

Connecting with other families

Decisions are always more powerful when you can gather others in your community to share your decision. This can start with sharing with others in your family, apartment building, cultural community, faith community, or school, amongst many other possibilities. Exploring possible decisions and sharing your decisions with other families in your community will also help you better understand who you will affect with your decisions, and how you can make decisions that are beneficial to the most humans and more-than-humans in your community!

Disciplinary Core Ideas and Important Phenomena

"Engaging in the practices of science helps students understand how scientific knowledge develops; such direct involvement gives them an appreciation of the wide range of approaches that are used to investigate, model, and explain the world." (NRC Framework 2012, p. 42)

Science Practices Emphasized

- Constructing explanations
- Obtaining, evaluating, and communicating information

Key Ideas & practices

Ethical deliberation and decision-making

Making decisions is complicated! Human communities have always made socio-ecological decisions. From choices about what to eat, where to live, how to get around, to whether water is safe to drink, among many others. These choices are shaped by our values and cultural practices. The socio-ecological decisions we make are so important because we need to take responsibility for how our decisions impact the systems we live in, and the futures we imagine for our communities as well as others.

Communicating scientific information

Communicating information is a skill that takes practice! When you communicate about scientific information, it's important to communicate not only what you found from your investigations and research, but also your **evidence** (from your data analysis that can back up what you say). Sometimes you are telling people something that they might disagree with, or sometimes you are telling people something that they already know and agree with. Having evidence and reasons for your decisions and recommendations will be important no matter who you communicate with.

CONNECT TO OTHER ACTIVITIES

- Learning Engagement 9.A: Connecting back to our "Should We" questions
- Learning Engagement 9.B: Returning to our models to ask more questions
- Learning Engagement 10.A: Making decisions around our "Should We" questions

LEARNING IN PLACES FRAMEWORKS TO CONSIDER

- Relationships in socio-ecological systems
- Socio-Ecological Decision-Making and Ethical Deliberation

